

# ED XRF - 3600C

---

## Energy-Dispersive Spectrometer XRF



EPCC / PRODUCTS / APPLICATION / SOFTWARE / ACCESSORIES / CONSUMABLES / SERVICES

**Analytical Technologies Limited**

An ISO 9001 Certified Company

[www.analyticalgroup.net](http://www.analyticalgroup.net)

## Introduction :

This instrument features a large-area graphene ultra-thin window electrically cooled semiconductor SDD detector, an ultra-low-loss test optical path, an ultra-thin beryllium window Oxford tube excitation light source, Siemens PLC control for single-sample and multi-sample chamber systems (with options for 9, 12, and 20 sample chambers) , a combined vacuum and helium system, a sample spinning system, and a three-fold security protection system for the instrument (detector antipuncture function, high-voltage key protection, and sample cover self-locking function) . The instrument seamlessly combines single-sample and multi-sample chamber injection modes. It is complemented latest research achievement, the XRF composition analysis software version 4.0 and RoHS 5.0 full intelligent version software. It enables one-click testing for both liquid and solid samples. Its powerful intelligent algorithms can automatically identify sample materials and select the appropriate curve, achieving true intelligent automatic detection for multi-sample positions.

The instrument offers low operating costs, improved maintenance performance, and enhanced convenience. It can be applied to a wide range of fields, from product management subject to regulations such as RoHS/ELV directives and toy directives, to everyday research in general material analysis. This includes element analysis in various industries, ranging from electronic and electrical materials to metal composition analysis, automotive mechanical testing, petrochemical element analysis, pharmaceutical and food quality control, geological mineral element analysis, and analysis in industries such as cement, refractory materials, and glass



12 sample chambers



9 sample chambers  
(with spinning)



20 sample chambers



Siemens PLC control for  
multisample chamber systems

Ultra-thin beryllium window Oxford tube excitation light source

Three-fold security protection system

Ultra-low-loss test optical path

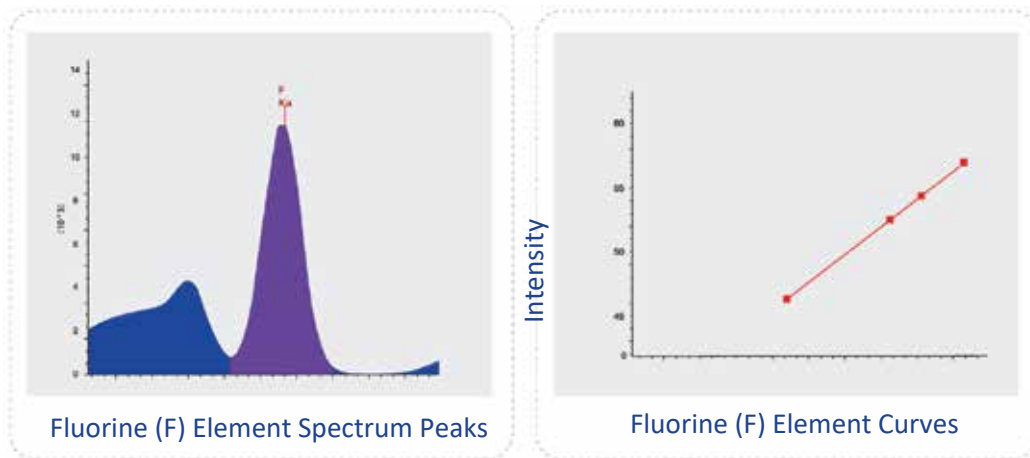
Sample spinning system

Ultra-thin window electrically cooled  
semiconductor SDD detector

Combined vacuum and helium system

## Outstanding Performance :

Equipped with a large-area graphene ultra-thin window electrically cooled semiconductor SDD detector, the instrument boasts a remarkable performance with the optimal coordination of a 4096 channel high-speed digital processing multi-channel analyzer, high-power high-voltage tube, and excitation light source, resulting in ultra-high sensitivity. Compared to previous models, the element range has been expanded to include fluorine (F), and the lower limit of element detection can be improved by 5 to 10 times, with a detection limit as low as 0.2 ppm (light matrix). Counting rates can be increased up to 300 KCPS, effectively addressing the demands of high-precision analysis and enhancing the reliability of analytical result



Measurement Times	Fluorite GBW07252/ CaF <sub>2</sub>	Sample Containing Fluorine (F) Elemen
&	F/45.098	F/2.64
1	45.18(%)	3.09(%)
2	45.19(%)	2.57(%)
3	44.96(%)	2.72(%)
4	45.06(%)	2.22(%)
5	45.06(%)	2.89(%)
6	44.77(%)	2.31(%)
7	45.08(%)	2.74(%)
8	45.19(%)	3.34(%)
9	45.03(%)	2.47(%)
10	44.97(%)	2.71(%)
11	45.30(%)	3.02(%)
Maximum Value	45.30(%)	3.34(%)
Minimum Value	44.77(%)	2.22(%)
Standard Deviation	0.14(%)	0.34(%)

Table of Fluorine (F) Element Stability

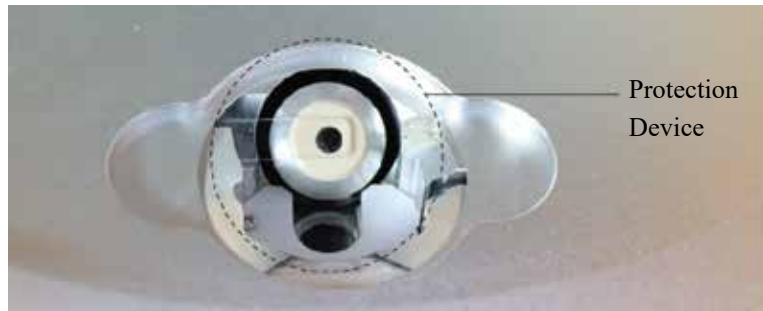
## Intelligent Switching :

The AI-based sample recognition system, in conjunction with a fully matched analysis mode, ensures that sample detection is completed in a single action, eliminating errors caused by manual curve selection. The multiple background simulation function helps mitigate deviations caused by sample differences. The powerful intelligent algorithm can automatically identify sample materials and select the appropriate curve, achieving true intelligent automatic detection for multi-sample positions. For light element testing, both vacuuming of powders and helium filling for liquid samples are achieved. The software enables seamless dual-gas path switching, effectively solving the issue of conventional XRF instruments being unable to measure light elements in liquids.



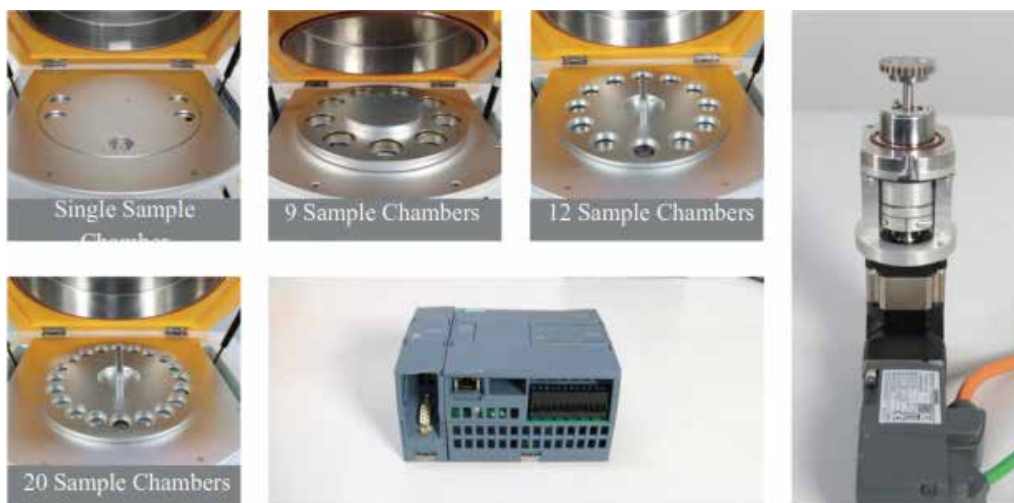
## Multiple Protection, Safety Assurance :

The detector protection device closes the detector window after instrument testing to prevent damage to the detector window. The instrument's protective cover, electromagnetic lock, and tube high-voltage interlock prevent the sample chamber cover from being opened during the testing process, thus preventing accidental harm to the operator when the cover is opened. Software misoperation reminders, a three-dimensional maze-like instrument design, electronic interlock sensing, mechanical isolation safety lock protection and software abnormal interruption are multiple protective measures that ensure the safety of users.



### Auto Sample Loading, Unmanned Operation:

The system is equipped with Siemens PLC control for 9- sample, 12- sample, and 20- sample chamber configurations. 12-sample and 20-sample chambers can be switched to a single sample chamber in one second, meeting the testing requirements for small and large samples. The 9-sample chamber rotation system improves the testing of non-homogeneous sample elements. Using multi-sample chamber systems for sample introduction can lead to a 50% reduction in equipment costs, and through human-machine cooperation, it can boost labor efficiency by 50%.



### Parameters :

- Elemental Analysis Range: Fluorine (F) to Uranium (U)
- Analytical Detection Limit: As low as 0.2 ppm (for light matrices)
- Analytical Range: ppm to 99.99%
- Analytical Accuracy: <math><0.05\%</math> (RSD value for multiple repeated measurements of main elements in samples with a content >96%)
- Detector Energy Resolution: SDD detector,  $\leq 129\text{eV}$
- Excitation Source: Tube voltage 5~50kV, tube current 0~1000uA
- High Voltage Generator: Imported Spellman High Voltage
- Testing Atmosphere: Atmospheric, Vacuum, Helium

- Sample Introduction System: 9 sample chambers (with cup rotation), 12 sample chambers + single chamber, 20 sample chambers + single chamber (optional), controlled by PLC Auto Sample Loading, Unmanned Operation
- Any number of automatically matchable or selectable analysis and identification models.
- Mutually independent matrix effect correction model
- Multivariate nonlinear regression program
- Temperature Range: 15°C to 30°C
- Power Supply: AC 220V ± 5V, recommended to configure with AC purified stabilized power supply
- Instrument Size: 646 (W) × 578 (D) × 388 (H) mm
- Sample Chamber Size: Φ340 × 64 (H) mm
- Instrument Weight: 85KG

### Configuration :

- 1. 9-Sample Chamber Package with Sample Rotation (Sample cups can rotate to reduce sample homogeneity errors, suitable for regular samples like powder compacts. Only 9 sample chambers are available, without single chamber switching function. Inner diameter of sample cups Φ35mm, outer diameter Φ42mm).
- 2. 12-Sample Chamber Package (Cannot rotate, suitable for testing materials like powder compacts. Switching between single and multiple sample chambers is possible. Inner diameter of sample cups Φ35mm, outer diameter Φ42mm).
- 3. 20-Sample Chamber Package (20 sample chambers cannot rotate, suitable for testing materials like plastic granules and liquids. Switching between single and multiple sample chambers is possible. Inner diameter of sample cups Φ25mm).

### Application :





**1. Analysis of harmful elements for RoHS, ELV, toy safety, footwear leather, and similar applications**



**2. Elemental analysis for environmental soil, solid waste, soil remediation, etc**



**3. Geological and mineral product analysis**



**4. Composition analysis of alloys (copper, stainless steel, etc**



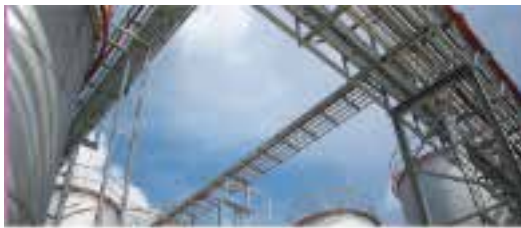
**5. Measurement of metal coating thickness, determination of plating solution and coating content**



**6. Detection of precious metals such as gold, platinum, silver, and various types of jewelry**



**7. Analysis of petroleum and chemical product content**



**8. Elemental analysis in building materials industry (cement, refractory materials, glass, etc.)**



**9. Determination of beneficial and harmful elements in feeds, fertilizers, etc.**



**10. Other inorganic elemental analysis industries**





## HPLC Servicing, Validation, Trainings and Preventive Maintenance :

**HPLC Servicing** :HPLC Servicing : We have team of service engineers who can attend to any make of HPLC promptly @the most affordable cost.

**Trainings** :We also take up preventive Maintenance to reduce downtime of HPLC's Trainings.

**AMC's/CMC** :AMC's/CMC :We offer user training both in-House and at customer sites on HPLC principles, operations, trouble-shooting.

**Validations** :Validations :We have protocols for carrying out periodic Validations as per GLP/GMP/USFDA norms.

**Instruments** :Instruments :We offer instruments/Renting Services Modules like pumps,detector etc. on Rent.



## About Analytical Technologies

Analytical Technologies is synonymous for offering technologies for doing analysis and is the Fastest Growing Global Brand having presence in at least 96 countries across the global. Analytical Technologies Limited is an ISO:9001 Certified Company engaged in Designing, Manufacturing, Marketing & providing Services for the Analytical, Chromatography, Spectroscopy, Bio Technology, Bio Medical, Clinical Diagnostics, Material Science & General Laboratory Instrumentation. Analytical Technologies, India has across the Country operations with at least 4 Regional Offices, 6 Branch Offices & Service Centers. Distributors & Channel partners worldwide.

## Our Products & Technologies



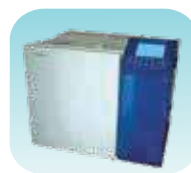
UV/VIS  
Spectro 2080+  
Double Beam



Infra FTIR



Optima Gas  
Chromatograph  
3007



Optima Gas  
Chromatograph  
2979 Plus



Flash  
Chromatograph



Atomic Absorption  
Spectrophotometer



Liquid Partical  
Counter



Optical Emission  
Spectrophotometer



DSC/TGA



Semi Auto Bio  
Chemistry Analyzer



HEMA 2062  
Hematology  
Analyzer



Micro Plate  
Reader/Washer



URINOVA 2800  
Urine Analyzer



Total Organic  
Carbon 3800



Fully Automated  
CLIA



NOVA-2100  
Chemistry Analyzer



PCR/Gradient PCR/  
RTPCR



TOC  
Analyzer



Laser Particle  
Size Analyzer



Ion Chromatograph



Water purification  
system

## Regulatory compliances



## Corporate Social Responsibility

Analytical Foundation is a nonprofit organization (NGO) found for the purpose of:



**Analytical**  
**Foundation**

1. Research & Innovation Scientist's awards/QC Professional Award : Quality life is possible by innovation only and the innovation is possible by research only, hence ANALYTICAL FOUNDATION is committed to identify such personalities for their contributions across various field of Science and Technology and awarding them yearly. To participate for award, send us your details of research / testing / publication at [Info@analyticalfoundation.org](mailto:Info@analyticalfoundation.org)

2. Improving quality of life by offering YOGA Training courses, Work shops/Seminars etc.

3. ANALYTICAL FOUNDATION aims to DETOXIFY human minds,souls and body by means of yoga, Meditation, Ayurveda, Health Care, Awards, Media, Events, Camps etc.

## Reach us @



Scan Me

HPLC Solutions   MultipleLabs   Analytical Bio-Med   Analytical Distributors   Analytical Foundation (Trust)

**Corporate & Regd. Office:**  
Analytical House, # E67 & E68,  
Ravi Park, Vasna Road, Baroda,  
Gujarat 390 015. INDIA

T: +91 265 2253620  
+91 265 2252839  
+91 265 2252370  
F: +91 265 2254395

E: [info@hplctechnologies.com](mailto:info@hplctechnologies.com)  
[info@multiplelabs.com](mailto:info@multiplelabs.com)  
[info@analyticalgroup.net](mailto:info@analyticalgroup.net)  
[info@analyticalbiomed.com](mailto:info@analyticalbiomed.com)

W. [www.analyticalgroup.net](http://www.analyticalgroup.net)  
[www.hplctechnologies.com](http://www.hplctechnologies.com)  
[www.multiplelabs.com](http://www.multiplelabs.com)  
[www.ais-india.com](http://www.ais-india.com)

Sales & Support Offices:  
across the country :  
Distributors & Channel  
partners World Wide

Note : Company reserves rights to add/delete/modify the contents / technical specifications of the catalogue without prior notice.